

LEADING IN
PRODUCTION
EFFICIENCY

www.durr.com



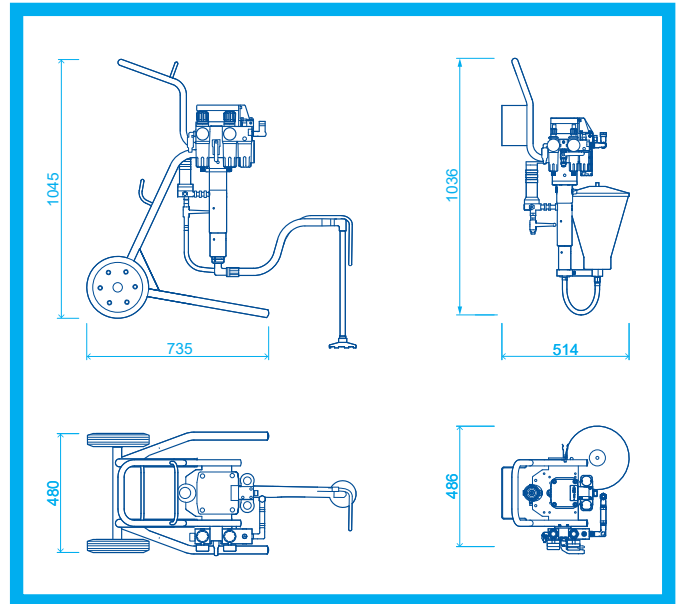
Ready to use
Great versatility
Wide range of use

EcoPump VP Package

High pressure painting equipment

TECHNICAL SPECIFICATION

Weight	16-45 kg (35-99 lbs)
Connector Outlet	M16x1,5 60°
Connector Air Inlet	G3/8" or G1/2"
Volume / Cycle	55/90/110 ccm/DH
Air pressure max.	7-8 bar (116-133 psi)
Material pressure max.	200 / 225 / 280 / 310 / 445 bar
Operating temperature min.	10 °C (50 °F)
Operating temperature max.	50 °C (122 °F)
Noise Level	<80.0 dB(A)
Transmission Ratio	25:1 / 32:1 / 39:1 / 40:1 / 64:1
ATEX Marking	Ex II 2G IIA T5



Filtration sieve selection guide



Nozzle size (mm/inch)	Flow rate * (L/min)	Angle range	Filter sieve – color (mesh/microns)	HP filter (mesh/microns)	Suction filtration (microns)
0,007/0,18	0.18	10-20°	200/74 (Red)	200/74	140-200
0,009/0,23	0.26	20-40°	200/74 (Red) 100/149 (Yellow)	200/74 100/149	200-250
0,011/0,28	0.4	10-60°	100/149 (Yellow)	100/149	250-280
0,013/0,33	0.6	10-80°	100/149 (Yellow)	100/149	250-280
0,015/0,38	0.8	10-80°	50/300 (White) 100/149 (Yellow)	60/250 100/149	280-315
0,017/0,43	1	10-70° 80°	50/300 (White) 100/149 (Yellow)	60/250 100/149	315 (1000)
0,019/0,48	1.3	10-50° 60-80°	50/300 (White) 30/500 (Green)	60/250 30/500	315 (1000)
0,021/0,53	1.6	30-80° 90°	50/300 (White) 30/500 (Green)	60/250 30/500	315 (1000)
0,023/0,58	1.9	30-90°	50/300 (White) 30/500 (Green)	60/250 30/500	1000
0,025/0,63	2.3	30-90°	30/500 (Green)	30/500	1000
0,027/0,68	2.7	30-90°	30/500 (Green)	30/500	1000
0,029/0,73	3.1	30-90°	30/500 (Green)	30/500	1000
0,031/0,78	3.5	30-90°	30/500 (Green)	30/500	1000

* flow rate on water at pressure of 100 bar



GOOD TO KNOW

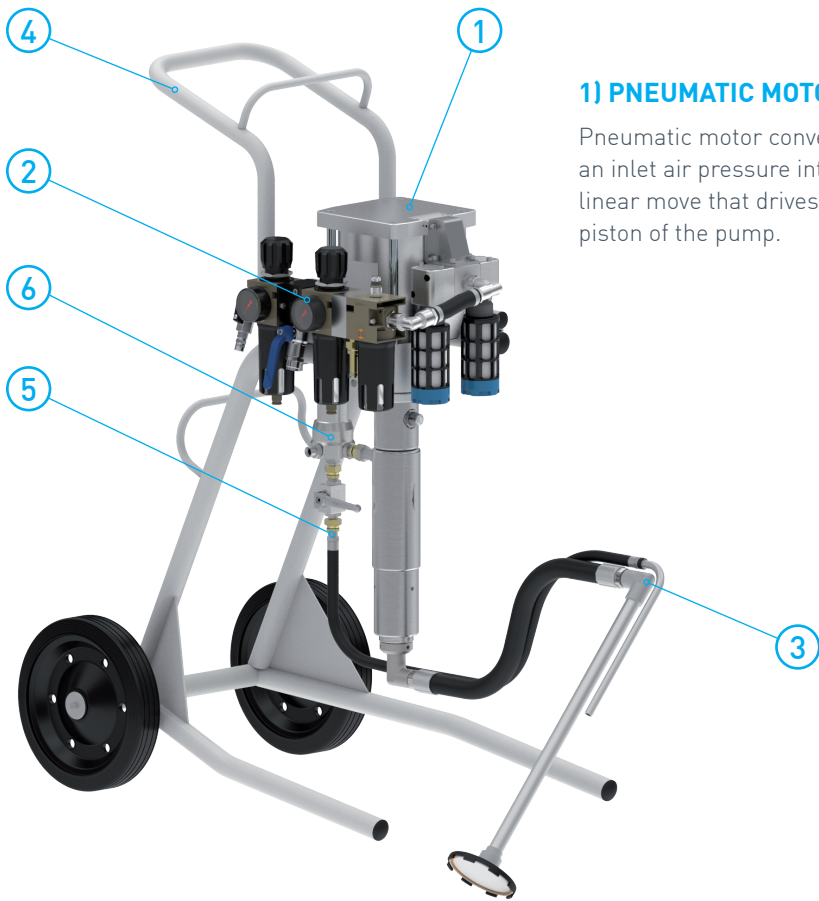
Check paint datasheet to find out recommended nozzle size and application pressure.

Consider solid content in the paint to select right pump flow rate.

Always select pump flow rate with 20% spare.

Make sure your air supply is capable to supply constant air pressure. Minimal usable pressure is 6 bar.

EcoPump VP package components



1) PNEUMATIC MOTOR & PUMPS

Pneumatic motor converts an inlet air pressure into linear move that drives a piston of the pump.



2) INLET AIR MODULES

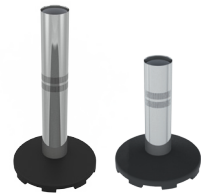
They are used for inlet air regulation for pneumatic motor. They are attached according to motor type and application method used (Airless, Air Assist).



3) MATERIAL FEEDING

They ensure a fluid feeding into the pump, there are these types available:

Direct suction



Flexible suction



Gravity vessel (6 liters)



4) MODULES FOR TRANSPORT

Cart

Allows an easy manipulation with device and is suitable for fixed or flexible suction unit.



Stand with wheels

They ensure a fluid feeding into the pump, there are these types available:



Bracket

It is for stable and permanent fixation, only for flexible suction unit



5) PRESSURE RELEASE UNIT

It is used for safe release of pressure from fluid section. There are several options of configuration.



6) HIGH PRESSURE FILTER

It is used for filtration of fluid on pump output. It has also a function of pulse dumper.

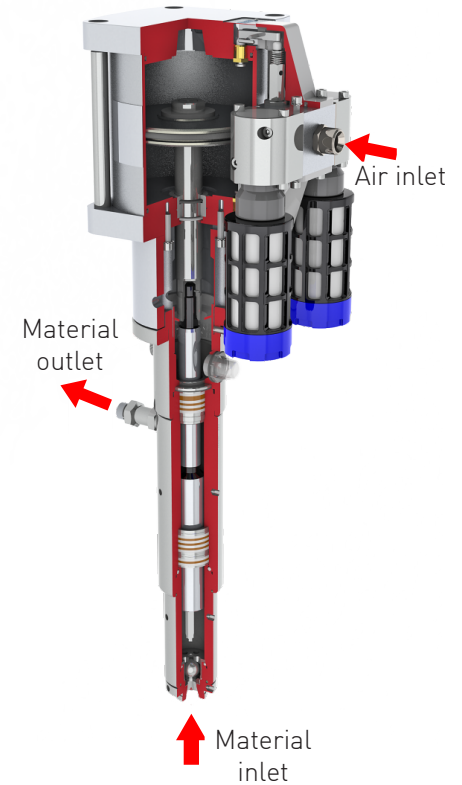


Pump specifications

	EcoPump VP 55 200	EcoPump VP 55 310	EcoPump VP 55 445
Part No.	N24170005 N24170015 - UF pack. N24170016 - UE pack.	N24170006 N24170017 - UF pack. N24170018 - UE pack.	N24170007 N24170019 - UF pack. N24170020 - UE pack.
Weight	12.9 kg	14.4 kg	16.8 kg
Displacement	55 cc/cycle	55 cc/cycle	55 cc/cycle
Ratio	25:1	39:1	64:1
Max. fluid pressure	200 bar (2.900 psi)	310 bar (4.490 psi)	445 bar (6.450 psi)
Flow rate @ rec. cycles	1.38 l/min (0.40 gal/m)	1.10 l/min (0.29 gal/m)	0.99 l/min (0.30 gal/m)
Recommended cycles	25 cyc/min	20 cyc/min	18 cyc/min

	EcoPump VP 90 280	EcoPump VP 110 225	EcoPump VP 55 200 HD
Part No.	N24170008 N24170021 - UF pack.	N24170009 N24170022- UF pack.	N24170033
Weight	18.7 kg	18.7 kg	13 kg
Displacement	90 cc/cycle	110 cc/cycle	55 cc/cycle
Ratio	40:1	32:1	25:1
Max. fluid pressure	280 bar (4.060 psi)	225 bar (3.260 psi)	200 bar (2.900 psi)
Flow rate @ rec. cycles	1.62 l/min (0.43 gal/m)	1.98 l/min (0.52 gal/m)	1.38 l/min (0.40 gal/m)
Recommended cycles	18 cyc/min	18 cyc/min	25 cyc/min

	EcoPump VP 55 310 HD	EcoPump VP 55 445 HD	EcoPump VP 90 280 HD	EcoPump VP 110 225 HD
Part No.	N24170034	N24170035	N24170036	N24170037
Weight	14.5 kg	16.9 kg	18.8 kg	18.8 kg
Displacement	55 cc/cycle	55 cc/cycle	90 cc/cycle	110 cc/cycle
Ratio	39:1	64:1	40:1	32:1
Max. fluid pressure	310 bar (4.490 psi)	445 bar (6.450 psi)	280 bar (4.060 psi)	225 bar (3.260 psi)
Flow rate @ rec. cycles	1.10 l/min (0.29 gal/m)	0.99 l/min (0.26 gal/m)	1.62 l/min (0.43 gal/m)	1.98 l/min (0.52 gal/m)
Recommended cycles	20 cyc/min	18 cyc/min	18 cyc/min	18 cyc/min



HIGH PRESSURE APPLICATION METHODS



Airless

Atomization of application material is provide by its passage thru hole of nozzle.

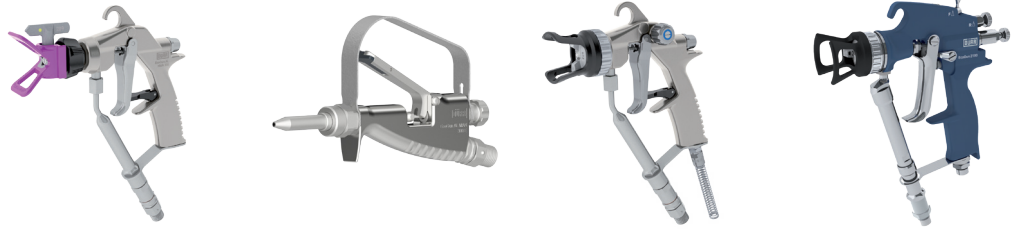
Spray pattern shape is determinate by type of spray nozzle.

Air Assist

Extends an Airless method by additional atomization air.

Additional air is use to regulate the beam shape and soften the edges of the spray pattern.

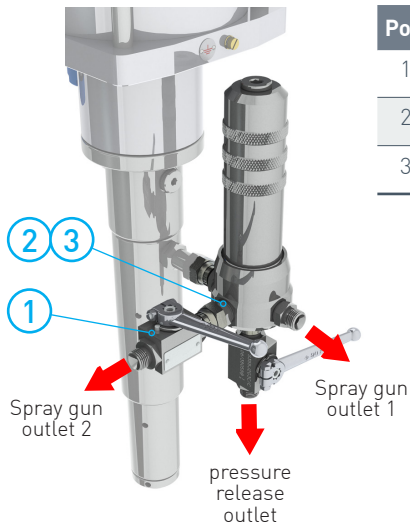
Manual spray guns



	EcoGun AL MAN 300	EcoGun AL MAN 300 E	EcoGun AA MAN 1PS	EcoGun AA MAN 2PS
Part No.	N36240002V	N36260001V	N36220002V	N36220001V
Application method	Airless	Airless	Air-assist	Air-assist
Type of Nozzle	Reversible	Reversible / Sealing tip	Flat	Flat
Max. fluid pressure	300 bar (4.350 psi)	300 bar (4.350 psi)	250 bar (3.630 psi)	250 bar (3.630 psi)
Connector, Media	M16x1,5 / 1/4" NPSM	M16x1,5 / 1/4" NPSM	M16x1,5 / 1/4" NPSM	M16x1,5 / 1/4" NPSM

Connecting two spray guns

PAINT CONNECTION



Pos.	Part No.	Type
1	M54300502	Ball valve OMK
2	M55070363	Fitting WJ
3	M35010257	O Ring Al



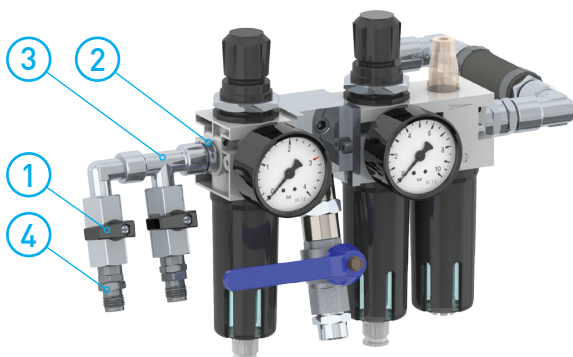
GOOD TO KNOW

Make sure the pump flow rate is sufficient to operate two guns! Check nozzle size and its flow rates.

Using ball valve is recommended in order to be able maintain spray gun while other is operating.

Using HP filter is recommended, it removes dirt from paint and also reduce pulsation

AIR CONNECTION - FOR AIR ASSIST VARIANTS ONLY



Pos.	Part No.	Type
1	M54300575	Ball Valve G1/4"
2	H42130001	Reduction G1/4" male / G1/4" male
3	M56010199	T-piece G1/4" Ms
4	M01200003	Air connection 1/4" UNI rotating

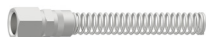
Accessories

AIR HOSES

Part No.	Type
W40030002	Hose 6x8 blue PA
M01010214	Connection air G1/4" 8x6 kink protection
M58900227	Push-in nipple G1/2" i L35



W40030002



M01010214



M58900227

HINTS



Always use air hose for Air Assist spray gun 0,5 m longer than paint hose.

To connect air supply into the pump use quick connection coupling (nipple).

PAINT HOSES

Part No.	Type
W40130208	Hose DN6 L7500 2xM16x1,5 PA1,4 PU, 325bar
W40130209	Hose DN6 L7500 2xM16x1,5 PA2,4 PU, 450bar
W40130207	Hose DN6 L7500 2xM16x1,5 KX2,4 PU, 250bar
W40070078	Hose protection, 8m
M55100169	Reduction M16x1,5 (F) to 1/4" NPS(M)



M55100169



DO YOU NEED OTHER LENGTH OR FITTING?



Use our configurator on the webshop. Search for part no. [W40650001V](#).

webshop.durr.com

EXTENSIONS FOR ECOGUN AL



Type	Rotary joint	Direct joint	Nozzle guard
Part No.	M22150012	M01010201	M6002001
Thread	11/16"-16 UN	11/16"-16 UN	11/16"-16 UN
Max. Fluid Pressure	250 bar (3.600 psi)	250 bar (3.600 psi)	
Usage	Rotary joint allows bending spray beam in any angle.	Direct joint is used to connect spray tip bracket with extension for straight spraying.	Compatible spray guns: EcoGun AL Man 300, EcoGun AL AUTO



Type	Extension pipes
Part No.	M19140001 / M19140002 / M19140003 / M19140004 / M19140005
Length	150 / 300 / 450 / 600 / 900 mm
Thread	11/16" -16 UN
Max. Fluid Pressure	250 bar (3.600 psi)
Usage	Extension tube with different lengths. By using connecting joints pipes can be connected to make any other length.

Nozzles



NOZZLES FOR ECOGUN AA MAN 1P [256]

Part No.	Type
M09020451	Nozzle 0,18 mm 10°/107°
M09020463	Nozzle 0,18 mm 10°/107° L
M09020452	Nozzle 0,18 mm 20°/207°
M09020464	Nozzle 0,18 mm 20°/207° L
M09020453	Nozzle 0,18 mm 30°/307°
M09020454	Nozzle 0,18 mm 40°/407°
M09020455	Nozzle 0,23 mm 10°/109°
M09020465	Nozzle 0,23 mm 10°/109° L
M09020456	Nozzle 0,23 mm 20°/209°
M09020466	Nozzle 0,23 mm 20°/209° L
M09020457	Nozzle 0,23 mm 30°/309°
M09020467	Nozzle 0,23 mm 30°/309°
M09020458	Nozzle 0,23 mm 40°/409°
M09020660	Nozzle 0,23 mm 50°/509°
M09020665	Nozzle 0,23 mm 60°/609°
M09020471	Nozzle 0,28 mm 20°/211°
M09020459	Nozzle 0,28 mm 30°/311°
M09020468	Nozzle 0,28 mm 30°/311° L
M09020460	Nozzle 0,28 mm 40°/411°

Part No.	Type
M09020661	Nozzle 0,28mm 50°/511°
M09020666	Nozzle 0,28 mm 60°/611°
M09020668	Nozzle 0,28 mm 70°/711°
M09020579	Nozzle 0,33 mm 20°/213°
M09020649	Nozzle 0,33 mm 30°/313°
M09020461	Nozzle 0,33 mm 40°/413°
M09020649	Nozzle 0,33 mm 40°/413° L
M09020662	Nozzle 0,33 mm 50°/513°
M09020470	Nozzle 0,33 mm 60°/613°
M09020471	Nozzle 0,33 mm 70°/713°
M09020645	Nozzle 0,33 mm 80°/813°
M09020648	Nozzle 0,38 mm 20°/215°
M09020650	Nozzle 0,38 mm 30°/315°
M09020657	Nozzle 0,38 mm 40°/415°
M09020462	Nozzle 0,38 mm 50°/515°
M09020472	Nozzle 0,38 mm 60°/615°
M09020473	Nozzle 0,38 mm 70°/715°
M09020670	Nozzle 0,38 mm 80°/815°
M09020673	Nozzle 0,38 mm 90°/915°

Part No.	Type
M09020655	0.43 mm (0.017")
M09020658	0.43 mm (0.017")
M09020474	0.43 mm (0.017")
M09020651	0.43 mm (0.017")
M09020643	0.43 mm (0.017")
M09020671	0.43 mm (0.017")
M09020674	0.43 mm (0.017")
M09020656	0.48 mm (0.019")
M09020659	0.48 mm (0.019")
M09020663	0.48 mm (0.019")
M09020667	0.48 mm (0.019")
M09020646	0.48 mm (0.019")
M09020672	0.48 mm (0.019")
M09020675	0.48 mm (0.019")
M09020664	0.53 mm (0.021")
M09020647	0.53 mm (0.021")
M09020669	0.53 mm (0.021")
M09020644	0.53 mm (0.021")
M09020676	0.53 mm (0.021")

NOZZLES FOR ECOGUN AA MAN 2P [2100] AND ECOGUN AA AUTO



Part No.	Type
M09020372	Nozzle 0.18 mm 10°/107° 6-KT
M09020373	Nozzle 0.18 mm 20°/207° 6-KT
M09020374	Nozzle 0.18 mm 30°/307° 6-KT
M09020375	Nozzle 0.18 mm 40°/407° 6-KT
M09020376	Nozzle 0.23 mm 10°/109° 6-KT
M09020377	Nozzle 0.23 mm 20°/209° 6-KT
M09020378	Nozzle 0.23 mm 30°/309° 6-KT
M09020379	Nozzle 0.23 mm 40°/409° 6-KT
M09020380	Nozzle 0.23 mm 50°/509° 6-KT
M09020381	Nozzle 0.23 mm 60°/609° 6-KT
M09020382	Nozzle 0.28 mm 10°/111° 6-KT
M09020383	Nozzle 0.28 mm 20°/211° 6-KT
M09020384	Nozzle 0.28 mm 30°/311° 6-KT
M09020385	Nozzle 0.28 mm 40°/411° 6-KT
M09020386	Nozzle 0.28 mm 50°/511° 6-KT
M09020387	Nozzle 0.28 mm 60°/611° 6-KT
M09020388	Nozzle 0.28 mm 70°/711° 6-KT
M09020389	Nozzle 0.33 mm 10°/113° 6-KT
M09020390	Nozzle 0.33 mm 20°/213° 6-KT
M09020391	Nozzle 0.33 mm 30°/313° 6-KT
M09020392	Nozzle 0.33 mm 40°/413° 6-KT
M09020393	Nozzle 0.33 mm 50°/513° 6-KT
M09020394	Nozzle 0.33 mm 60°/613° 6-KT
M09020395	Nozzle 0.33 mm 70°/713° 6-KT
M09020396	Nozzle 0.33 mm 80°/813° 6-KT
M09020397	Nozzle 0.38 mm 10°/115° 6-KT
M09020398	Nozzle 0.38 mm 20°/215° 6-KT

Part No.	Type
M09020399	Nozzle 0,38 mm 30°/315° 6-KT
M09020400	Nozzle 0,38 mm 40°/415° 6-KT
M09020401	Nozzle 0,38 mm 50°/515° 6-KT
M09020402	Nozzle 0,38 mm 60°/615° 6-KT
M09020403	Nozzle 0,38 mm 70°/715° 6-KT
M09020404	Nozzle 0,38 mm 80°/815° 6-KT
M09020405	Nozzle 0,38 mm 90°/915° 6-KT
M09020406	Nozzle 0,43 mm 10°/117° 6-KT
M09020407	Nozzle 0,43 mm 20°/217° 6-KT
M09020408	Nozzle 0,43 mm 30°/317° 6-KT
M09020409	Nozzle 0,43 mm 40°/417° 6-KT
M09020410	Nozzle 0,43 mm 50°/517° 6-KT
M09020411	Nozzle 0,43 mm 60°/617° 6-KT
M09020412	Nozzle 0,43 mm 70°/717° 6-KT
M09020413	Nozzle 0,43 mm 80°/817° 6-KT
M09020414	Nozzle 0,43 mm 90°/917° 6-KT
M09020415	Nozzle 0,48 mm 10°/119° 6-KT
M09020416	Nozzle 0,48 mm 20°/219° 6-KT
M09020417	Nozzle 0,48 mm 30°/319° 6-KT
M09020418	Nozzle 0,48 mm 40°/419° 6-KT
M09020419	Nozzle 0,48 mm 50°/519° 6-KT
M09020420	Nozzle 0,48 mm 60°/619° 6-KT
M09020421	Nozzle 0,48 mm 70°/719° 6-KT
M09020422	Nozzle 0,48 mm 80°/819° 6-KT
M09020423	Nozzle 0,48 mm 90°/919° 6-KT
M09020424	Nozzle 0,53 mm 10°/121° 6-KT
M09020425	Nozzle 0,53 mm 20°/221° 6-KT

Part No.	Type
M09020426	Nozzle 0,53 mm 30°/321° 6-KT
M09020427	Nozzle 0,53 mm 40°/421° 6-KT
M09020428	Nozzle 0,53 mm 50°/521° 6-KT
M09020429	Nozzle 0,53 mm 60°/621° 6-KT
M09020430	Nozzle 0,53 mm 70°/721° 6-KT
M09020431	Nozzle 0,53 mm 80°/821° 6-KT
M09020432	Nozzle 0,53 mm 90°/921° 6-KT
M09020433	Nozzle 0,60 mm 10°/124° 6-KT
M09020434	Nozzle 0,60 mm 20°/224° 6-KT
M09020435	Nozzle 0,60 mm 30°/324° 6-KT
M09020436	Nozzle 0,60 mm 40°/424° 6-KT
M09020437	Nozzle 0,60 mm 50°/524° 6-KT
M09020438	Nozzle 0,60 mm 60°/624° 6-KT
M09020439	Nozzle 0,60 mm 70°/724° 6-KT
M09020440	Nozzle 0,60 mm 80°/824° 6-KT
M09020441	Nozzle 0,60 mm 90°/924° 6-KT
M09020442	Nozzle 0,70 mm 10°/128° 6-KT
M09020443	Nozzle 0,70 mm 20°/228° 6-KT
M09020444	Nozzle 0,70 mm 30°/328° 6-KT
M09020445	Nozzle 0,70 mm 40°/428° 6-KT
M09020446	Nozzle 0,70 mm 50°/528° 6-KT
M09020447	Nozzle 0,70 mm 60°/628° 6-KT
M09020448	Nozzle 0,70 mm 70°/728° 6-KT
M09020449	Nozzle 0,70 mm 80°/828° 6-KT
M09020450	Nozzle 0,70 mm 90°/928° 6-KT

Nozzles



REVERSIBLE NOZZLES FOR ECOGUN AL MAN / AUTO

Part No.	Type
M09020475	0,18 mm 10°/107°
M09020476	0,18 mm 20°/207°
M09020477	0,23 mm 10°/109°
M09020478	0,23 mm 20°/209°
M09020479	0,23 mm 30°/309°
M09020480	0,23 mm 40°/409°
M09020481	0,28 mm 10°/111°
M09020482	0,28 mm 20°/211°
M09020483	0,28 mm 30°/311°
M09020484	0,28 mm 40°/411°
M09020485	0,28 mm 50°/511°
M09020486	0,28 mm 60°/611°
M09020487	0,33 mm 10°/113°
M09020488	0,33 mm 20°/213°
M09020489	0,33 mm 30°/313°
M09020490	0,33 mm 40°/413°
M09020491	0,33 mm 50°/513°
M09020492	0,33 mm 60°/613°
M09020493	0,33 mm 70°/713°
M09020494	0,33 mm 80°/813°
M09020495	0,38 mm 10°/115°
M09020496	0,38 mm 20°/215°
M09020497	0,38 mm 30°/315°
M09020498	0,38 mm 40°/415°
M09020499	0,38 mm 50°/515°
M09020500	0,38 mm 60°/615°
M09020501	0,38 mm 70°/715°
M09020502	0,38 mm 80°/815°
M09020503	0,43 mm 10°/117°

Part No.	Type
M09020504	0,43 mm 20°/217°
M09020505	0,43 mm 30°/317°
M09020506	0,43 mm 40°/417°
M09020507	0,43 mm 50°/517°
M09020508	0,43 mm 60°/617°
M09020509	0,43 mm 70°/717°
M09020510	0,43 mm 80°/817°
M09020511	0,48 mm 20°/219°
M09020512	0,48 mm 30°/319°
M09020513	0,48 mm 40°/219°
M09020514	0,48 mm 50°/219°
M09020515	0,48 mm 60°/219°
M09020516	0,48 mm 70°/219°
M09020517	0,48 mm 80°/219°
M09020518	0,53 mm 30°/321°
M09020519	0,53 mm 40°/421°
M09020520	0,53 mm 50°/521°
M09020521	0,53 mm 60°/621°
M09020522	0,53 mm 70°/721°
M09020523	0,53 mm 80°/821°
M09020524	0,53 mm 90°/921°
M09020525	0,58 mm 30°/323°
M09020526	0,58 mm 40°/423°
M09020527	0,58 mm 50°/523°
M09020528	0,58 mm 60°/623°
M09020529	0,58 mm 70°/723°
M09020530	0,58 mm 80°/823°
M09020531	0,58 mm 90°/923°
M09020532	0,63 mm 30°/325°

Part No.	Type
M09020533	0,63 mm 40°/425°
M09020534	0,63 mm 50°/525°
M09020535	0,63 mm 60°/625°
M09020536	0,63 mm 70°/725°
M09020537	0,63 mm 80°/825°
M09020538	0,63 mm 90°/925°
M09020539	0,68 mm 30°/327°
M09020540	0,68 mm 40°/427°
M09020541	0,68 mm 50°/527°
M09020542	0,68 mm 60°/627°
M09020543	0,68 mm 70°/727°
M09020544	0,68 mm 80°/827°
M09020545	0,68 mm 90°/927°
M09020546	0,73 mm 30°/329°
M09020547	0,73 mm 40°/429°
M09020548	0,73 mm 50°/529°
M09020549	0,73 mm 60°/629°
M09020550	0,73 mm 70°/729°
M09020551	0,73 mm 80°/829°
M09020552	0,73 mm 90°/929°
M09020553	0,78 mm 30°/331°
M09020554	0,78 mm 40°/431°
M09020555	0,78 mm 50°/531°
M09020556	0,78 mm 60°/631°
M09020557	0,78 mm 70°/731°
M09020558	0,78 mm 80°/831°
M09020559	0,78 mm 90°/931°

Your local Dürr contact:



CONTACT

Dürr Systems AG
Application Technology
 Carl-Benz-Str. 34
 74321 Bietigheim-Bissingen
 Germany

T: +49 7142 78-0
 E: sales@duerr.com